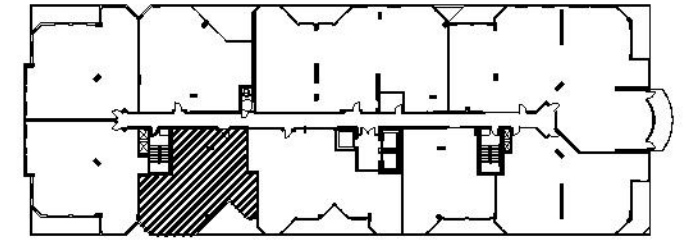
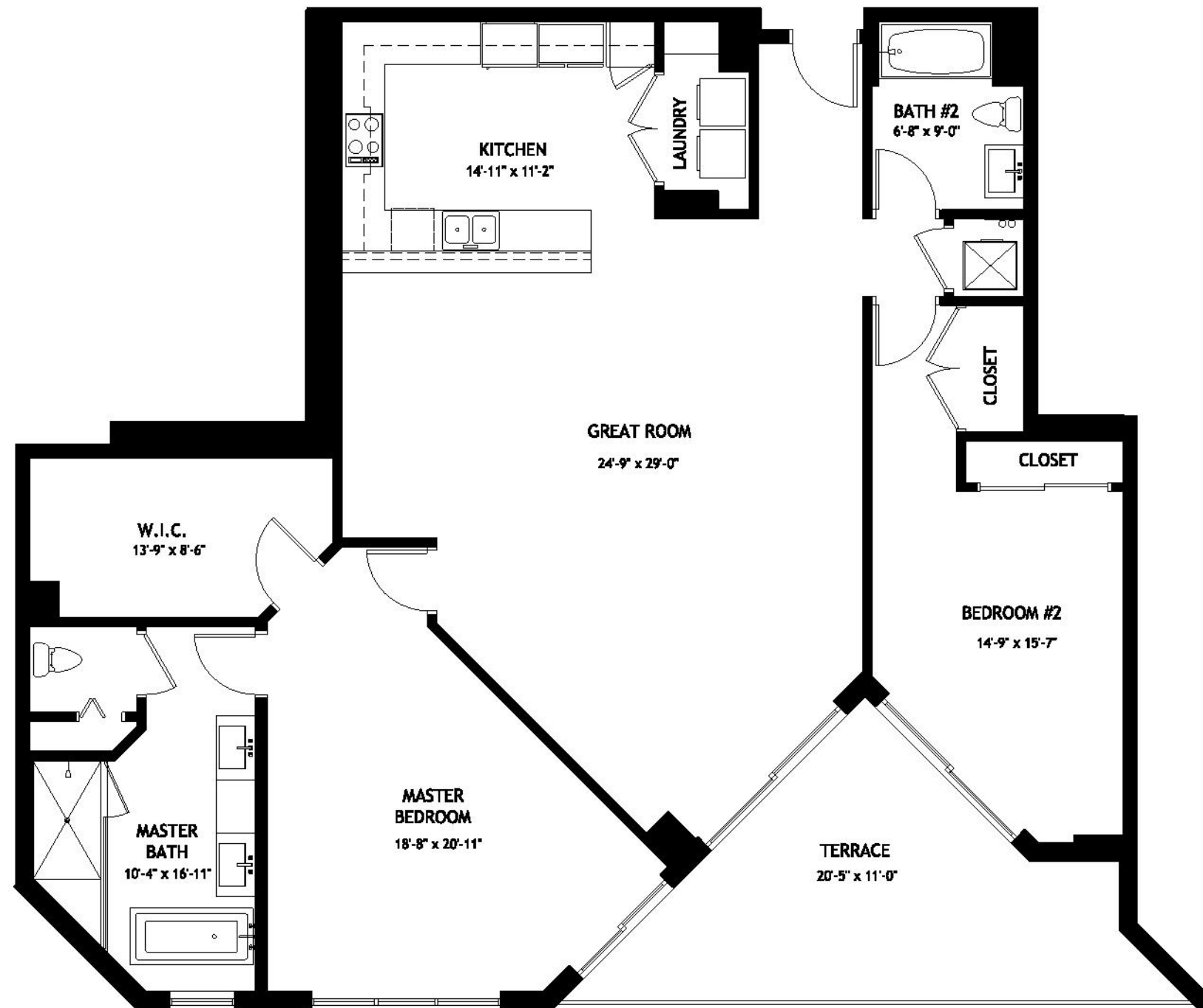




**NORTH BUILDING**



**PENTHOUSE FLOOR**



**PENTHOUSE '3'**

**2 BEDROOMS**  
**2 BATHROOMS**

<b>A/C</b>	<b>1,821 SQ. FT. (169.1 m<sup>2</sup>)</b>
<b>BALCONY</b>	<b>229 SQ. FT. (21.2 m<sup>2</sup>)</b>
<b>TOTAL</b>	<b>2,050 SQ. FT. (190.3 m<sup>2</sup>)</b>