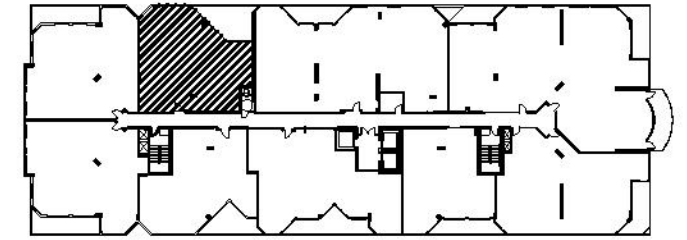
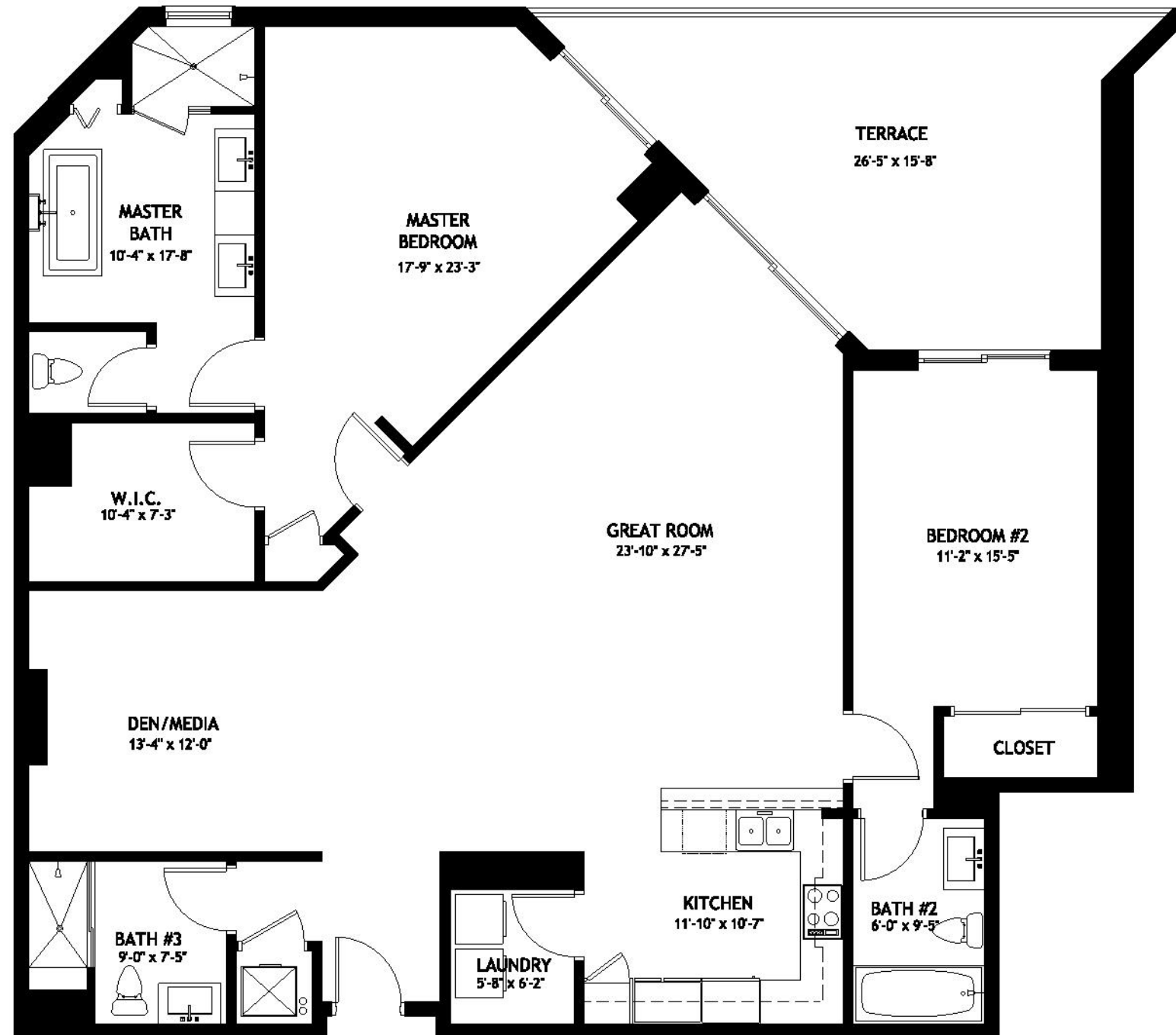




NORTH BUILDING



PENTHOUSE FLOOR



PENTHOUSE '4'

- 2 BEDROOMS, DEN**
- 3 BATHROOMS**

A/C	1,961 SQ. FT. (182.1 m ²)
BALCONY	295 SQ. FT. (27.4 m ²)
TOTAL	2,256 SQ. FT. (209.5 m²)