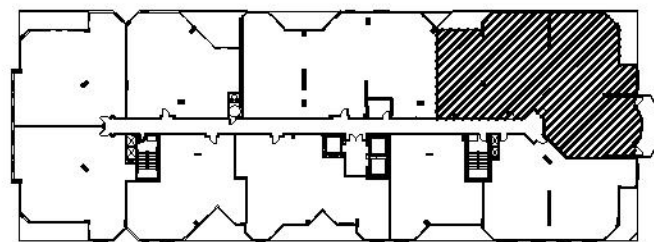


**NORTH BUILDING**



**PENTHOUSE FLOOR**

**PENTHOUSE '8'**

**4 BEDROOMS**  
**4.5 BATHROOMS**

A/C	4,320 SQ. FT. (401.3 m <sup>2</sup> )
BALCONY	407 SQ. FT. ( 37.8 m <sup>2</sup> )
<b>TOTAL</b>	<b>4,727 SQ. FT. (439.1 m<sup>2</sup>)</b>